



Versa-Roll™ Roller Apparatus

CLS-3855



OPERATIONS MANUAL



3800 North Mill Road • Vineland, NJ 08360 • USA

Rev. F 5-15

Tel: 1-800-843-1794 • Fax: 1-800-922-4361

Web: www.cglifesciences.com

Contents:

General Description..... page 3

- Specifications.....page 3**
- Features.....page 3**
- Available Options.....page 3**

Unpacking Instructions.....page 3

- Figure 1 – Overview Drawing..... page 4**

Operating Instructions.....page 4

- Figure 2 – Rear Panel.....page 5**
- Figure 3 – Front Panel..... page 5**

Motion Alarm Instructions..... page 6

- General Description..... page 6**
- Operating Instructions..... page 6**

Battery Back-up Instructions..... page 7

- General Description..... page 7**
- Operating Instructions..... page 7**

Troubleshooting and Service..... page 8

- Common Troubleshooting Tips..... page 8**
- Preventive Maintenance Suggestions.....page 8**
- Reset Mains Circuit Breaker..... page 8**

CGLS Warranty and Limitations of Liability..... page 9

General Description

The CGLS Cell Production Roller Apparatus is designed for use in the production of various attachment cells. The units are available in 10 bottle positions up to 55 bottle positions. Units have been engineered for maximum reliability. Our rollers are formulated from a chemical resistant, non-slip EDPM rubber. All units feature a solid state control with a heavy-duty maintenance free DC brushless motor. The entire frame is powder coated aluminum for durability and cleanliness. All models also feature rubber bumpers and rear guards. Units have a detachable power cord for ease of maneuverability. All Position Drive is standard on all units to prevent any lightweight bottles from slipping.

Specifications:

- Speed Range: 0.2 – 6.0 rpm
- Dimensions CLS-3855-011 (HxWxD): 77 ¼"x 32 ¼" x 25 ½" (196 x 81.9 x 64.5cm) *including bumpers*
- Weight CLS-3855-011: 227 lb (102.97 kg)
- Rating: CLS-3855-011, 115VAC fused at 2 amps, same with Alarm option
- Rating: CLS-3855-011E, 240VAC fused at 2 amps, same with Alarm option

Features:

- ✓ Steel reinforced Polyurethane timing belts maintain durability and precise roller rotation
- ✓ Locking Speed Control Knob to prevent unintentional changes to speed setting
- ✓ Brushless DC "maintenance free" Motor
- ✓ All Position Drive - each roller is individually driven
- ✓ Accommodates standard roller bottles (110-120mm diameter)

Available Options:

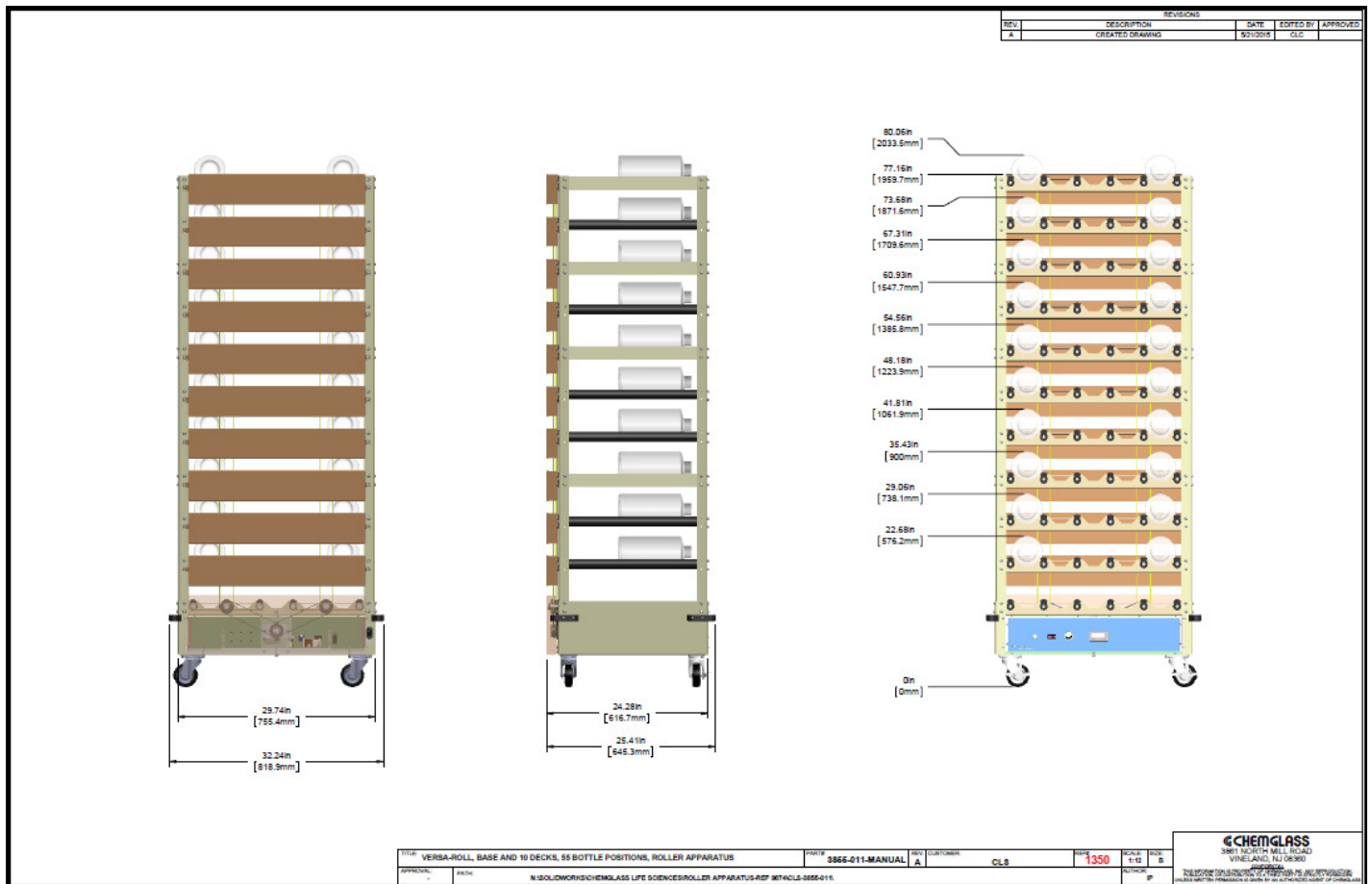
- Battery Back-Up system – allows up to 36 hours of uninterrupted rotation should there be a loss of power, or, if the unit needs to be moved without interrupting roller rotation
- Rotation Alarm – 2 motion sensors will depict any stoppage in roller motion, sounding an audible alarm as well as a flashing l.e.d on the front panel
- Slow Speed Kit – allows roller rotation down to .1 rpm's

Unpacking Instructions

Unpack the Roller Apparatus carefully. Be certain to retain the warranty information, all packing material and operations manual. Record the serial number of the unit, located on the lower right corner of the front panel.

All damage claims must be initiated with the delivering carrier within five (5) days of receipt of the product.

Figure 1: Overview Drawing



This unit must only be connected to the correct voltage supply receptacle using the supplied detachable power cord or one with same voltage and amperage requirement

Operating Instructions

1. Versa-Roll™ Roller Apparatus is shipped complete and ready for operation. With the unit turned off (rocker switch in the “OFF” position), plug the detachable power cord into the power inlet located in the rear of the unit. SEE FIGURE 2. Plug the opposite end into an appropriate outlet (one providing power at the rated voltage and frequency).
2. The Roller Apparatus can be locked into position by pressing down on the two locking casters on the front of the unit
3. Carefully position bottles between rollers with bottle cap facing towards front of unit.
4. Press the power switch to “ON” position. The switch will illuminate indicating that the unit is in operation. SEE FIGURE 3.
5. To operate, turn the speed control knob to set the desired rpm value. The units are designed to operate within a range of .2 - 6 rpm. Adjust the speed by turning the speed control knob, CW to increase speed, CCW to decrease it. The unit will ramp up (or down) to your selected speed. Turn the “LOCK” ring clockwise about an eighth of a turn to prevent any inadvertent

changes to the set speed. Turn the "LOCK" ring counterclockwise to unlock the speed control knob. SEE FIGURE 3.

Figure 2: REAR PANEL

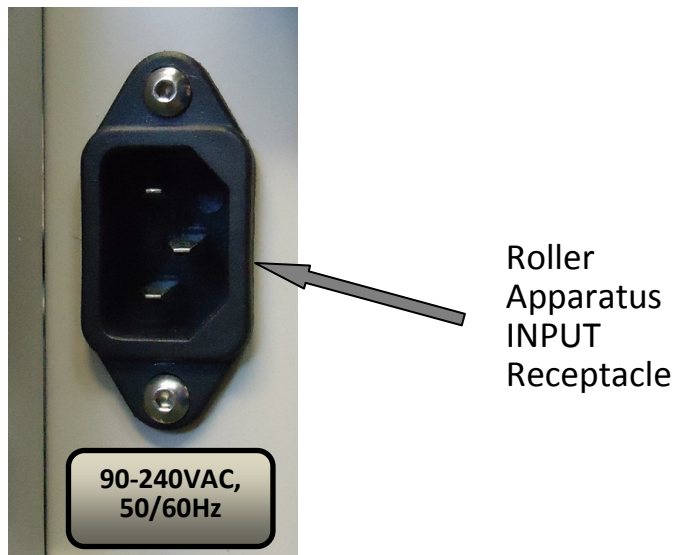
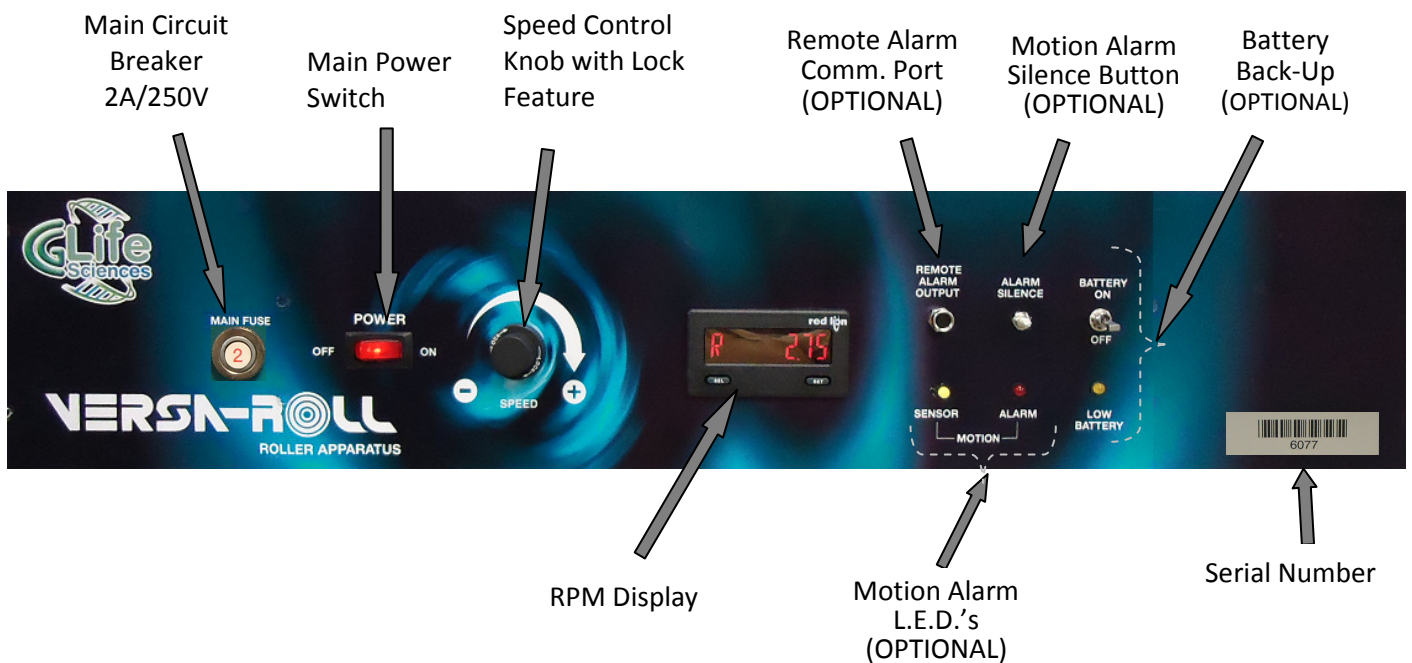


Figure 3: FRONT PANEL



Motion Alarm Instructions

- Option

General Description:

The Motion Alarm circuit monitors the Roller Apparatus to verify the continuous motion of the roller shafts. Should the motion stop an alarm indicator will illuminate on the front panel and an audible alarm will sound.

Operation:

The alarm circuit is shown working by the blinking yellow / green l.e.d., labeled “MOTION SENSOR” located on the front panel – see figure 4. The blinking yellow / green l.e.d. indicates the circuit is receiving pulses from the sensors. If a pulse is not received within 2 ½ minutes, then the alarm is triggered. The red l.e.d. is illuminated – labeled “MOTION ALARM”, an 85 dB audible alarm is sounded, and the “REMOTE ALARM OUTPUT” relay is switched.

The “ALARM SILENCE” push button is also located on the front panel – see figure 4. When the alarm has been activated, pressing this button will silence the audible alarm, turn off the ALARM l.e.d. and switch the Alarm Output relay. The alarm circuit remains off until it is reset. The circuit may be reset by cycling the power or re-establishing the roller motion.

Relay is switched if alarm is activated

Press to silence Alarm

Figure 4: Alarm Option



Blinks indicating alarm function is on

Alarm state triggered if illuminated

Battery Back-up Instructions

- Option

General Description:

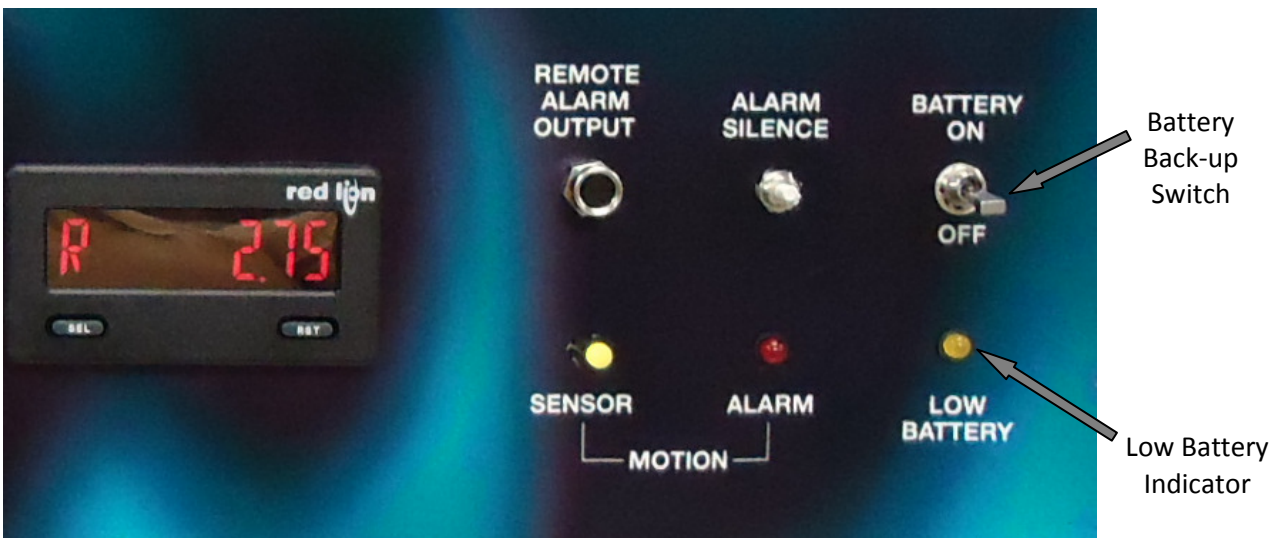
The Battery Back-up system allows up to 36 hours of uninterrupted rotation should there be a loss of power. It may also be used to allow the unit to continue operate while being moved from one location to another. Unit will maintain rotational speed without the need to reprogram.

Operation:

The Battery Back-up “ON/OFF” toggle switch must be turned on when the Roller Apparatus is initially plugged in and the main power switch turned on. The unit should remain on for 14 hours to allow the batteries to fully charge. *Note: If the Roller Apparatus needs to be turned off completely, then both the Main Power Switch and the Battery Back-up Switch should be turned “OFF”.*

If the LOW BATTERY indicator l.e.d. comes on, then the Roller Apparatus should be plugged into a suitable AC outlet that has power to re-charge the batteries.

Note: We recommend that the batteries be replaced every 3 years.



Troubleshooting and Service

In the event that a problem develops with any CGLS product, **DO NOT** attempt to perform any service on the unit without first contacting the CGLS Customer Service Department at 1-800-843-1794. **Unauthorized servicing may void the warranty.** CGLS will supply information on minor repairs upon request. In any correspondence to CGLS concerning these units, please include the catalog number (CLS-3855-xxx) and the serial number, which may be found in the lower right corner of the front panel.

WARNING: POTENTIAL SHOCK HAZARD EXISTS WHEN FRONT OR REAR COVER IS REMOVED.

DISCONNECT POWER CORD BEFORE SERVICING.

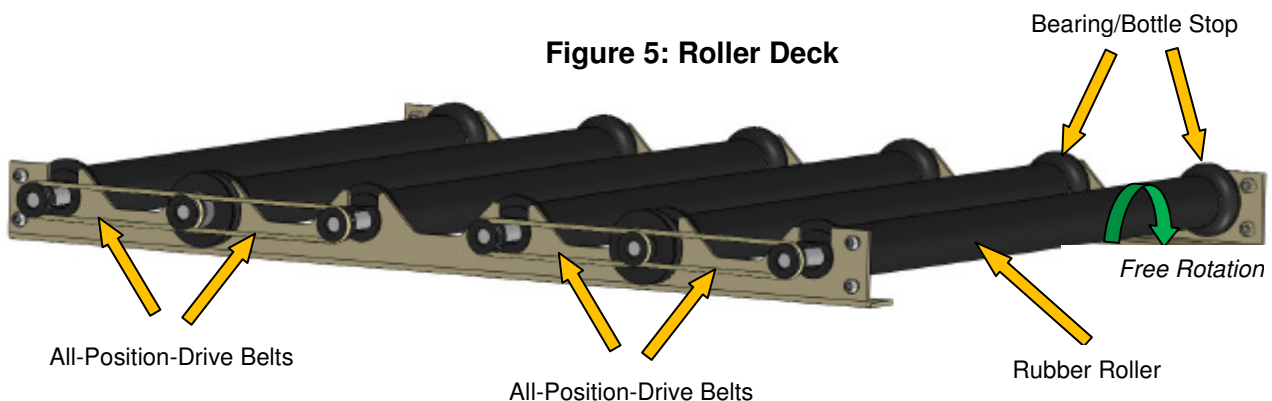
Common Troubleshooting Tips

1. Unit does not turn on:
 - a. Check condition of Mains Circuit Breaker.
 - b. Ensure power cord is fully inserted into "INPUT Receptacle" located in rear of unit.
 - c. Ensure power cord is fully inserted suitable power outlet.
 - d. Verify power outlet
2. Unit turns on but there's no rotation:
 - a. Verify movement of drive belts, located in rear of unit. Ensure set screws are tightened
3. Contact CGLS for additional troubleshooting assistance.

Reset Circuit Breaker – Depress tripped circuit breaker located on front panel. If circuit breaker does not reset then contact CGLS for assistance.

Preventive Maintenance Suggestions

1. Check All-Position-Drive (APD) Belts for any surface cracking or loss of tension every 12 months. *Check every 6 months if used in CO2 incubator.* Replace as necessary (p/n: ELE-045-009). Note – 4 APD belts are used per deck, see figure 5.
2. Inspect Bearing/Bottle Stop for free rotation every 12 months. *Check every 6 months if used in CO2 incubator.* Temporarily remove belts to check for free rotation, see figure 5. Note – 12 Bearing/Bottle Stops per deck.
3. Periodically inspect Rubber Roller for damage caused by broken or chipped bottles. Replace as needed.
4. Periodically ensure that all pulley set-screws are secure.



CGLS WARRANTY AND LIMITATION OF LIABILITY

CGLS warrants to the original purchaser, its products to be free from defects in materials and workmanship for a **period of two (2) years from the date of shipment, unless otherwise specified**. Our obligation under this warranty is limited to, at our option, repair or replace any defective part or parts, which shall be returned to us. **CGLS takes no responsibility for damage to merchandise in transit**. All such claims must be submitted to the carrier. This warranty shall not apply to any equipment or parts which have been repaired or altered outside our factory, or subjected to misuse, negligence, accidents, faulty or **unauthorized** repairs or modifications. In addition, CGLS, shall not be responsible to the original purchaser or any other party or parties for bodily or property loss, damages, or injuries of any kind or nature through either direct or indirect use of the product. This warranty is made expressly in lieu of any and all other warranties, expressed or implied, or statutory as to the merchantability, fitness for purpose sold, description, quality, productiveness or any other matter. All other such warranties are specifically excluded.

SHIPMENTS

All items are shipped F.O.B. Vineland, New Jersey with the charges prepaid and added to the invoice. Special shipping instructions should accompany your order. We will select the best method if none is specified. Air shipments are available for an additional charge. Delivery of large products shall be to the customer's loading dock. **It is the customer's responsibility to arrange movement from the loading dock to the site of use, unless otherwise agreed to by CGLS**. Products requiring special or crating may incur additional handling fees.

CGLS takes every reasonable precaution to ensure that its products arrive without damage. However, occasionally damage may occur during the shipment of a product. For this reason, it is imperative that Purchaser examine each product **immediately** upon receipt. In the event the Purchaser detects any damage to the product, Purchaser shall **immediately** notify **CGLS** and the carrier who delivered the product. **Failure to notify CGLS and the carrier of any damage within five (5) days of receipt of the product shall constitute a waiver of any claim for damage to the product**. The freight carrier shall be exclusively responsible for any damage which occurs during shipment.